

Student Opinion of Teaching Effectiveness (SOTE)- College of Business and Public Administration Winter Intercession 2021 Summary

1. Rate your interest in the subject matter of this course before you took the class.

| | Response by Course Level | | | |
|---------------------|--------------------------|-------|-------|-------|
| | Lower | Upper | Grad | Total |
| Very High (1) | 38.5% | 27.9% | 25.0% | 28.9% |
| High (2) | 30.8% | 29.4% | 6.3% | 25.8% |
| Moderately High (3) | 23.1% | 30.9% | 25.0% | 28.9% |
| Moderately Low (4) | 0.0% | 8.8% | 25.0% | 10.3% |
| Low (5) | 7.7% | 2.9% | 18.8% | 6.2% |
| Very Low (6) | 0.0% | 0.0% | 0.0% | 0.0% |
| Mean | 2.1 | 2.3 | 3.1 | 2.4 |
| Median | 2 | 2 | 3 | 2 |
| Count | 13 | 68 | 16 | 97 |

2. How many class sessions did you attend?

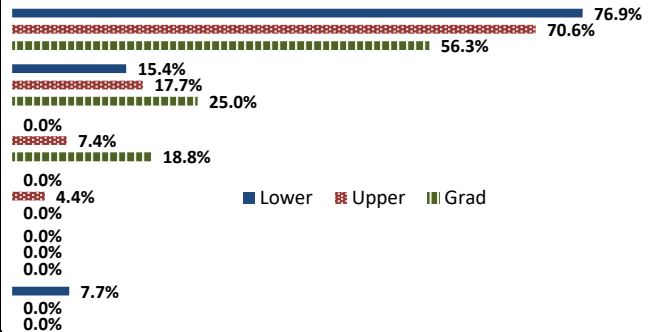
| | Response by Course Level | | | |
|--------------------|--------------------------|-------|--------|-------|
| | Lower | Upper | Grad | Total |
| All (1) | 75.0% | 89.4% | 100.0% | 89.4% |
| Almost All (2) | 0.0% | 9.1% | 0.0% | 6.4% |
| More than Half (3) | 0.0% | 0.0% | 0.0% | 0.0% |
| Less than Half (4) | 25.0% | 1.5% | 0.0% | 4.3% |
| Mean | 1.8 | 1.1 | 1.0 | 1.2 |
| Median | 1 | 1 | 1 | 1 |
| Count | 12 | 66 | 16 | 94 |

3. Why did you take this course? Choose all that apply.

| | Response by Course Level | | | |
|---|--------------------------|-------|-------|-------|
| | Lower | Upper | Grad | Total |
| 3a. The course fulfills a general education requirement. | 38.5% | 36.8% | 43.8% | 38.1% |
| 3b. The course fulfills a requirement in my major. | 92.3% | 82.4% | 87.5% | 84.5% |
| 3c. I have enjoyed the professor's class(es) in the past. | 23.1% | 4.4% | 0.0% | 6.2% |
| 3d. The course will improve job/career opportunities. | 61.5% | 41.2% | 37.5% | 43.3% |
| 3e. The course sounded interesting to me. | 46.2% | 32.4% | 12.5% | 30.9% |

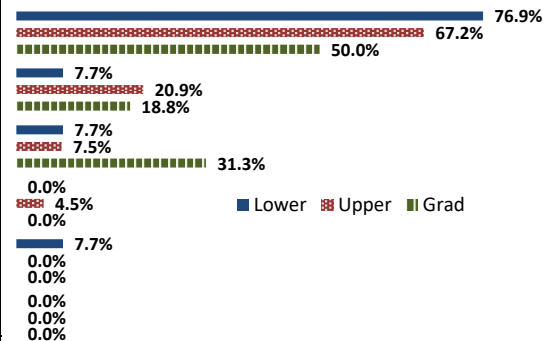
4. How would you rate the overall quality of instruction in this course?

| | Response by Course Level | | | |
|--------------------|--------------------------|-------|-------|-------|
| | Lower | Upper | Grad | Total |
| Excellent (6) | 76.9% | 70.6% | 56.3% | 69.1% |
| Very Good (5) | 15.4% | 17.7% | 25.0% | 18.6% |
| Good (4) | 0.0% | 7.4% | 18.8% | 8.3% |
| Fair (3) | 0.0% | 4.4% | 0.0% | 3.1% |
| Poor (2) | 0.0% | 0.0% | 0.0% | 0.0% |
| Unsatisfactory (1) | 7.7% | 0.0% | 0.0% | 1.0% |
| Mean | 5.5 | 5.5 | 5.4 | 5.5 |
| Median | 6 | 6 | 6 | 6 |
| Count | 13 | 68 | 16 | 97 |



5. How would you rate your professor's specific contribution to you learning in this course?

| | Response by Course Level | | | |
|--------------------|--------------------------|-------|-------|-------|
| | Lower | Upper | Grad | Total |
| Excellent (6) | 76.9% | 67.2% | 50.0% | 65.6% |
| Very Good (5) | 7.7% | 20.9% | 18.8% | 18.8% |
| Good (4) | 7.7% | 7.5% | 31.3% | 11.5% |
| Fair (3) | 0.0% | 4.5% | 0.0% | 3.1% |
| Poor (2) | 7.7% | 0.0% | 0.0% | 1.0% |
| Unsatisfactory (1) | 0.0% | 0.0% | 0.0% | 0.0% |
| Mean | 5.5 | 5.5 | 5.2 | 5.4 |
| Median | 6 | 6 | 6 | 6 |
| Count | 13 | 67 | 16 | 96 |



Student Opinion of Teaching Effectiveness (SOTE)- College of Education Winter Intercession 2021 Summary

1. Rate your interest in the subject matter of this course before you took the class.

| | Response by Course Level | | | |
|---------------------|--------------------------|-------|-------|-------|
| | Lower | Upper | Grad | Total |
| Very High (1) | 0.0% | 0.0% | 80.0% | 80.0% |
| High (2) | 0.0% | 0.0% | 0.0% | 0.0% |
| Moderately High (3) | 0.0% | 0.0% | 20.0% | 20.0% |
| Moderately Low (4) | 0.0% | 0.0% | 0.0% | 0.0% |
| Low (5) | 0.0% | 0.0% | 0.0% | 0.0% |
| Very Low (6) | 0.0% | 0.0% | 0.0% | 0.0% |
| Mean | . | . | 1.4 | 1.4 |
| Median | . | . | 1 | 1 |
| Count | 0 | 0 | 5 | 5 |

2. How many class sessions did you attend?

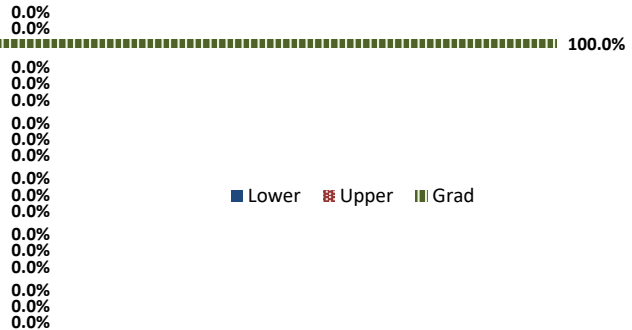
| | Response by Course Level | | | |
|--------------------|--------------------------|-------|-------|-------|
| | Lower | Upper | Grad | Total |
| All (1) | 0.0% | 0.0% | 80.0% | 80.0% |
| Almost All (2) | 0.0% | 0.0% | 20.0% | 20.0% |
| More than Half (3) | 0.0% | 0.0% | 0.0% | 0.0% |
| Less than Half (4) | 0.0% | 0.0% | 0.0% | 0.0% |
| Mean | . | . | 1.2 | 1.2 |
| Median | . | . | 1 | 1 |
| Count | 0 | 0 | 5 | 5 |

3. Why did you take this course? Choose all that apply.

| | Response by Course Level | | | |
|---|--------------------------|-------|-------|-------|
| | Lower | Upper | Grad | Total |
| 3a. The course fulfills a general education requirement. | 0.0% | 0.0% | 0.0% | 0.0% |
| 3b. The course fulfills a requirement in my major. | 0.0% | 0.0% | 80.0% | 80.0% |
| 3c. I have enjoyed the professor's class(es) in the past. | 0.0% | 0.0% | 0.0% | 0.0% |
| 3d. The course will improve job/career opportunities. | 0.0% | 0.0% | 20.0% | 20.0% |
| 3e. The course sounded interesting to me. | 0.0% | 0.0% | 0.0% | 0.0% |

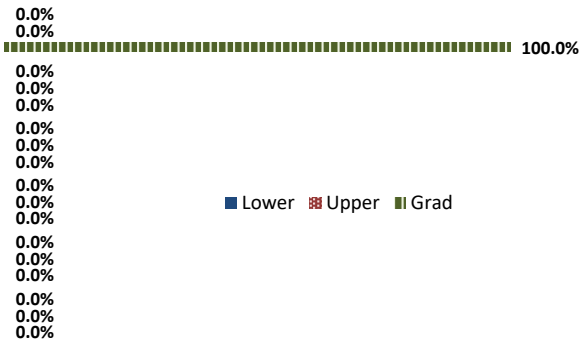
4. How would you rate the overall quality of instruction in this course?

| | Response by Course Level | | | |
|--------------------|--------------------------|-------|--------|--------|
| | Lower | Upper | Grad | Total |
| Excellent (6) | 0.0% | 0.0% | 100.0% | 100.0% |
| Very Good (5) | 0.0% | 0.0% | 0.0% | 0.0% |
| Good (4) | 0.0% | 0.0% | 0.0% | 0.0% |
| Fair (3) | 0.0% | 0.0% | 0.0% | 0.0% |
| Poor (2) | 0.0% | 0.0% | 0.0% | 0.0% |
| Unsatisfactory (1) | 0.0% | 0.0% | 0.0% | 0.0% |
| Mean | . | . | 6.0 | 6.0 |
| Median | . | . | 6 | 6 |
| Count | 0 | 0 | 5 | 5 |



5. How would you rate your professor's specific contribution to you learning in this course?

| | Response by Course Level | | | |
|--------------------|--------------------------|-------|--------|--------|
| | Lower | Upper | Grad | Total |
| Excellent (6) | 0.0% | 0.0% | 100.0% | 100.0% |
| Very Good (5) | 0.0% | 0.0% | 0.0% | 0.0% |
| Good (4) | 0.0% | 0.0% | 0.0% | 0.0% |
| Fair (3) | 0.0% | 0.0% | 0.0% | 0.0% |
| Poor (2) | 0.0% | 0.0% | 0.0% | 0.0% |
| Unsatisfactory (1) | 0.0% | 0.0% | 0.0% | 0.0% |
| Mean | . | . | 6.0 | 6.0 |
| Median | . | . | 6 | 6 |
| Count | 0 | 0 | 5 | 5 |



Student Opinion of Teaching Effectiveness (SOTE)- College of Natural Sciences Winter Intercession 2021 Summary

1. Rate your interest in the subject matter of this course before you took the class.

| | Response by Course Level | | | |
|---------------------|--------------------------|-------|-------|-------|
| | Lower | Upper | Grad | Total |
| Very High (1) | 26.7% | 25.6% | 16.7% | 25.0% |
| High (2) | 33.3% | 29.5% | 50.0% | 32.5% |
| Moderately High (3) | 30.0% | 19.2% | 33.3% | 23.3% |
| Moderately Low (4) | 6.7% | 19.2% | 0.0% | 14.2% |
| Low (5) | 0.0% | 0.0% | 0.0% | 0.0% |
| Very Low (6) | 3.3% | 6.4% | 0.0% | 5.0% |
| Mean | 2.3 | 2.6 | 2.2 | 2.5 |
| Median | 2 | 2 | 2 | 2 |
| Count | 30 | 78 | 12 | 120 |

2. How many class sessions did you attend?

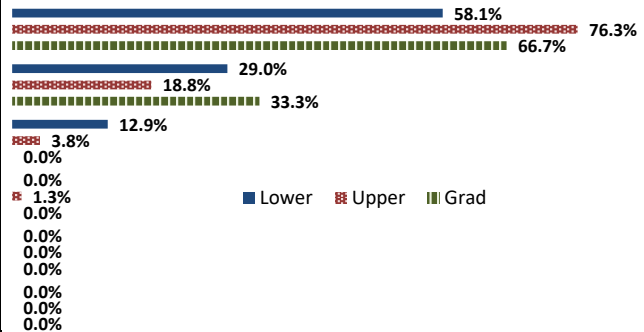
| | Response by Course Level | | | |
|--------------------|--------------------------|-------|--------|-------|
| | Lower | Upper | Grad | Total |
| All (1) | 86.7% | 86.5% | 100.0% | 87.9% |
| Almost All (2) | 13.3% | 12.2% | 0.0% | 11.2% |
| More than Half (3) | 0.0% | 1.4% | 0.0% | 0.9% |
| Less than Half (4) | 0.0% | 0.0% | 0.0% | 0.0% |
| Mean | 1.1 | 1.1 | 1.0 | 1.1 |
| Median | 1 | 1 | 1 | 1 |
| Count | 30 | 74 | 12 | 116 |

3. Why did you take this course? Choose all that apply.

| | Response by Course Level | | | |
|---|--------------------------|-------|--------|-------|
| | Lower | Upper | Grad | Total |
| 3a. The course fulfills a general education requirement. | 38.7% | 32.5% | 8.3% | 31.7% |
| 3b. The course fulfills a requirement in my major. | 74.2% | 88.8% | 100.0% | 86.2% |
| 3c. I have enjoyed the professor's class(es) in the past. | 19.4% | 7.5% | 41.7% | 13.8% |
| 3d. The course will improve job/career opportunities. | 19.4% | 21.3% | 16.7% | 20.3% |
| 3e. The course sounded interesting to me. | 25.8% | 21.3% | 8.3% | 21.1% |

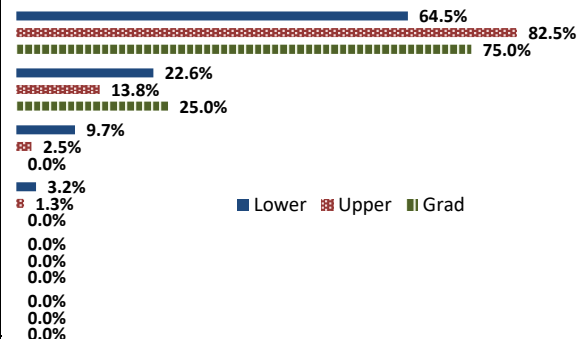
4. How would you rate the overall quality of instruction in this course?

| | Response by Course Level | | | |
|--------------------|--------------------------|-------|-------|-------|
| | Lower | Upper | Grad | Total |
| Excellent (6) | 58.1% | 76.3% | 66.7% | 70.7% |
| Very Good (5) | 29.0% | 18.8% | 33.3% | 22.8% |
| Good (4) | 12.9% | 3.8% | 0.0% | 5.7% |
| Fair (3) | 0.0% | 1.3% | 0.0% | 0.8% |
| Poor (2) | 0.0% | 0.0% | 0.0% | 0.0% |
| Unsatisfactory (1) | 0.0% | 0.0% | 0.0% | 0.0% |
| Mean | 5.5 | 5.7 | 5.7 | 5.6 |
| Median | 6 | 6 | 6 | 6 |
| Count | 31 | 80 | 12 | 123 |



5. How would you rate your professor's specific contribution to you learning in this course?

| | Response by Course Level | | | |
|--------------------|--------------------------|-------|-------|-------|
| | Lower | Upper | Grad | Total |
| Excellent (6) | 64.5% | 82.5% | 75.0% | 77.2% |
| Very Good (5) | 22.6% | 13.8% | 25.0% | 17.1% |
| Good (4) | 9.7% | 2.5% | 0.0% | 4.1% |
| Fair (3) | 3.2% | 1.3% | 0.0% | 1.6% |
| Poor (2) | 0.0% | 0.0% | 0.0% | 0.0% |
| Unsatisfactory (1) | 0.0% | 0.0% | 0.0% | 0.0% |
| Mean | 5.5 | 5.8 | 5.7 | 5.7 |
| Median | 6 | 6 | 6 | 6 |
| Count | 31 | 80 | 12 | 123 |



Student Opinion of Teaching Effectiveness (SOTE)- College of Social and Behavioral Sciences Winter Intercession 2021 Summary

1. Rate your interest in the subject matter of this course before you took the class.

| | Response by Course Level | | | |
|---------------------|--------------------------|-------|------|-------|
| | Lower | Upper | Grad | Total |
| Very High (1) | 22.2% | 24.0% | 0.0% | 23.1% |
| High (2) | 11.1% | 28.0% | 0.0% | 19.2% |
| Moderately High (3) | 29.6% | 20.0% | 0.0% | 25.0% |
| Moderately Low (4) | 25.9% | 16.0% | 0.0% | 21.2% |
| Low (5) | 7.4% | 4.0% | 0.0% | 5.8% |
| Very Low (6) | 3.7% | 8.0% | 0.0% | 5.8% |
| Mean | 3.0 | 2.7 | . | 2.8 |
| Median | 3 | 2 | . | 3 |
| Count | 27 | 25 | 0 | 52 |

2. How many class sessions did you attend?

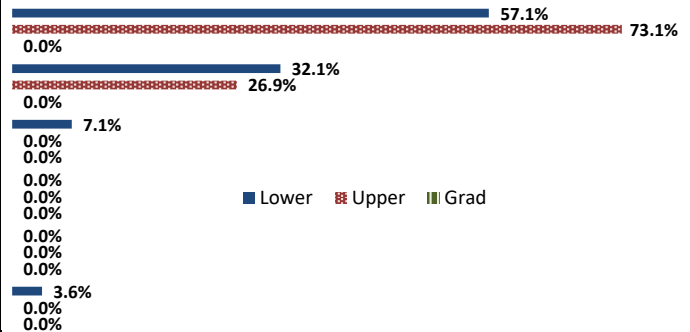
| | Response by Course Level | | | |
|--------------------|--------------------------|--------|------|-------|
| | Lower | Upper | Grad | Total |
| All (1) | 96.2% | 100.0% | 0.0% | 98.1% |
| Almost All (2) | 3.9% | 0.0% | 0.0% | 1.9% |
| More than Half (3) | 0.0% | 0.0% | 0.0% | 0.0% |
| Less than Half (4) | 0.0% | 0.0% | 0.0% | 0.0% |
| Mean | 1.0 | 1.0 | . | 1.0 |
| Median | 1 | 1 | . | 1 |
| Count | 26 | 26 | 0 | 52 |

3. Why did you take this course? Choose all that apply.

| | Response by Course Level | | | |
|---|--------------------------|-------|------|-------|
| | Lower | Upper | Grad | Total |
| 3a. The course fulfills a general education requirement. | 82.1% | 80.8% | 0.0% | 81.5% |
| 3b. The course fulfills a requirement in my major. | 46.4% | 61.5% | 0.0% | 53.7% |
| 3c. I have enjoyed the professor's class(es) in the past. | 3.6% | 11.5% | 0.0% | 7.4% |
| 3d. The course will improve job/career opportunities. | 14.3% | 15.4% | 0.0% | 14.8% |
| 3e. The course sounded interesting to me. | 25.0% | 34.6% | 0.0% | 29.6% |

4. How would you rate the overall quality of instruction in this course?

| | Response by Course Level | | | |
|--------------------|--------------------------|-------|------|-------|
| | Lower | Upper | Grad | Total |
| Excellent (6) | 57.1% | 73.1% | 0.0% | 64.8% |
| Very Good (5) | 32.1% | 26.9% | 0.0% | 29.6% |
| Good (4) | 7.1% | 0.0% | 0.0% | 3.7% |
| Fair (3) | 0.0% | 0.0% | 0.0% | 0.0% |
| Poor (2) | 0.0% | 0.0% | 0.0% | 0.0% |
| Unsatisfactory (1) | 3.6% | 0.0% | 0.0% | 1.9% |
| Mean | 5.4 | 5.7 | . | 5.5 |
| Median | 6 | 6 | . | 6 |
| Count | 28 | 26 | 0 | 54 |



5. How would you rate your professor's specific contribution to your learning in this course?

| | Response by Course Level | | | |
|--------------------|--------------------------|-------|------|-------|
| | Lower | Upper | Grad | Total |
| Excellent (6) | 64.3% | 76.9% | 0.0% | 70.4% |
| Very Good (5) | 21.4% | 23.1% | 0.0% | 22.2% |
| Good (4) | 10.7% | 0.0% | 0.0% | 5.6% |
| Fair (3) | 3.6% | 0.0% | 0.0% | 1.9% |
| Poor (2) | 0.0% | 0.0% | 0.0% | 0.0% |
| Unsatisfactory (1) | 0.0% | 0.0% | 0.0% | 0.0% |
| Mean | 5.5 | 5.8 | . | 5.6 |
| Median | 6 | 6 | . | 6 |
| Count | 28 | 26 | 0 | 54 |

